



impo

8" PASLANMAZ POMPA
8" SS PUMP



50 Hz seçim aralığı: Q= 60 m³/ sa - 104 m³/ sa
Standart Klepe Çıkışı : 5" İçten Pasolu 11 Diş (NPT : Özel istek)
Fan tipi: Semiaksiyel
Dönüş : Saat Yönü Ters
Bağlantı : NEMA Standardına uygun
Mil Çapı : 25 mm

Minimum sıvı seviyesi: Emiş süzgecinin altından itibaren 1200 mm.
Maksimum pompa dış çapı (Kablo muhafazası ile birlikte): 182 mm

Pompalanan Sıvı: Kimyasal ve mekanik aşındırıcı olmayan akışkan.
İzin veren maksimum kum miktarı = 50 g/m³
İzin verilen katı parçacık ölçüsü: Max 2mm

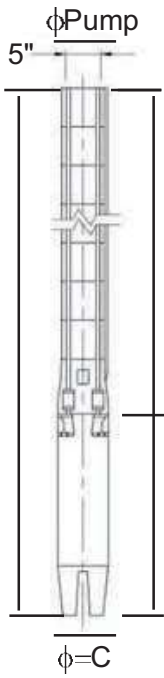
İmalat ve güvenlik standartları:
TS 11146:1993 TS EN 809:2000 98/37/EC Tarih 01 / 2013
TS EN ISO 12100-1:2007 TS EN ISO 12100-2:2006 REV. 0

Operating range at 50 Hz: Q= 60 m³/ h - 104 m³/ h
Standard Outlet : 5" Inside Threaded 11 TPI (NPT : Optional)
Impeller type: Mixed flow
Rotation : CCW
Connection : According to NEMA Standard
Shaft Diameter : 25 mm

Minimum liquid level (NPSH) : 1200 mm from bottom of suction grid
Maximum pump (Wet end) diameter - (Including cable guard): 182 mm

Liquid being pumped: Chemically and mechanically non aggressive.
Maximum allowable solid quantity = 50 g/m³
Solid dimension: Max 2mm

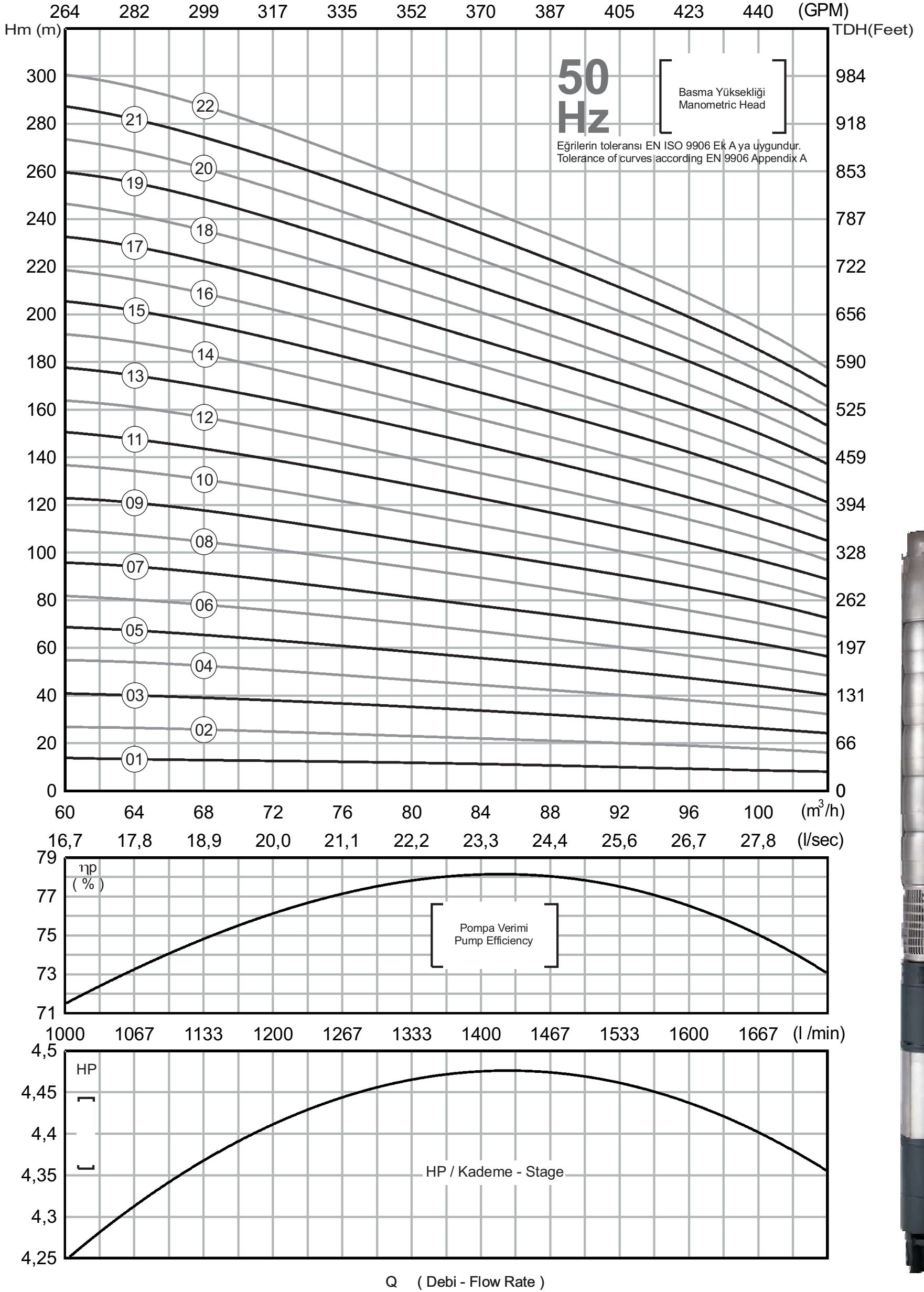
Construction and safety standards:
TS 11146:1993 TS EN 809:2000 98/37/EC Date 01 / 2013
TS EN ISO 12100-1:2007 TS EN ISO 12100-2:2006 REV. 0



POMPA TİPİ PUMP TYPE	MOTOR MOTEUR			ÖLÇÜLER / DIMENSIONS (mm)										AĞIRLIK / WEIGHT (kg)						
	6" HP	8" HP	kW	8"-6"	8"-8"	6"	8"	8"-6"	8"-8"	6"	8"	8"-6"	8"-8"	ø D	MOTOR		POMPA PUMP		TOPLAM TOTAL	
				L	L	E	E	B	B	ø = C	ø = C	ø PUMP	ø PUMP		6"	8"	8"-6"	8"-8"	8"-6"	8"-8"
SS 872/01	5,5	-	4	1200	-	630	-	570	-	145	-	174	-	5"	46	-	22	-	68	-
SS 872/02	10	-	7,5	1348	-	650	-	698	-	145	-	174	-	5"	48	-	25	-	73	-
SS 872/03	15	-	11	1556	-	730	-	826	-	145	-	174	-	5"	56	-	29	-	85	-
SS 872/04	17,5	-	13	1734	-	780	-	954	-	145	-	174	-	5"	60	-	32	-	92	-
SS 872/05	25	-	18,5	1962	-	880	-	1082	-	145	-	174	-	5"	72	-	35	-	107	-
SS 872/06	30	30	22	2190	2151	980	930	1210	1221	145	195	174	182	5"	82	121	39	40	121	161
SS 872/07	35	35	26	2368	2389	1030	1040	1338	1349	145	195	174	182	5"	88	140	42	44	130	184
SS 872/08	35	35	26	2496	2517	1030	1040	1466	1477	145	195	174	182	5"	88	140	45	48	133	188
SS 872/09	40	40	30	2704	2645	1110	1040	1594	1605	145	195	174	182	5"	98	140	49	52	147	192
SS 872/10	50	50	37	2912	2803	1190	1070	1722	1733	145	195	174	182	5"	106	146	52	55	158	201
SS 872/11	50	50	37	3040	2931	1190	1070	1850	1861	145	195	174	182	5"	106	146	56	59	162	205
SS 872/12	60	60	45	3248	3119	1270	1130	1978	1989	145	195	174	182	5"	116	158	59	63	175	221
SS 872/13	60	60	45	3376	3247	1270	1130	2106	2117	145	195	174	182	5"	116	158	62	67	178	225
SS 872/14	-	70	52	-	3455	-	1210	-	2245	-	195	-	182	5"	-	177	-	71	-	248
SS 872/15	-	70	52	-	3583	-	1210	-	2373	-	195	-	182	5"	-	177	-	75	-	252
SS 872/16	-	75	55	-	3751	-	1250	-	2501	-	195	-	182	5"	-	184	-	79	-	263
SS 872/17	-	75	55	-	3879	-	1250	-	2629	-	195	-	182	5"	-	184	-	83	-	267
SS 872/18	-	80	59	-	4037	-	1280	-	2757	-	195	-	182	5"	-	190	-	87	-	277
SS 872/19	-	90	66	-	4250	-	1365	-	2885	-	195	-	182	5"	-	204	-	91	-	295
SS 872/20	-	90	66	-	4378	-	1365	-	3013	-	195	-	182	5"	-	204	-	95	-	299
SS 872/21	-	100	75	-	4571	-	1430	-	3141	-	195	-	182	5"	-	218	-	98	-	316
SS 872/22	-	100	75	-	4699	-	1430	-	3269	-	195	-	182	5"	-	218	-	102	-	320

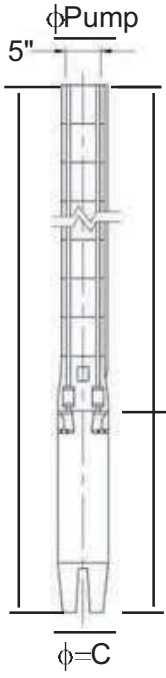
POMPA TİPİ PUMP TYPE	MOTOR MOTEUR			m ³ /h	0	60	64	68	72	76	80	84	88	92	96	100	104
	6" HP	8" HP	kW	l / sec	0,00	16,67	17,78	18,89	20,00	21,11	22,22	23,33	24,44	25,56	26,67	27,78	28,89
				gpm	0	264	282	299	317	335	352	370	387	405	423	440	458
SS 872/01	5,5	-	4		19	14	13	13	13	12	12	11	11	10	9	9	8
SS 872/02	10	-	7,5		36	27	26	26	25	24	23	22	21	20	19	18	16
SS 872/03	15	-	11		55	41	40	39	38	37	35	34	32	30	28	27	24
SS 872/04	17,5	-	13		72	55	54	52	51	49	46	45	42	40	38	36	32
SS 872/05	25	-	18,5		92	69	67	65	64	61	58	56	53	50	47	45	40
SS 872/06	30	30	22		110	82	80	78	76	73	70	67	64	60	56	54	48
SS 872/07	35	35	26		129	96	94	91	89	85	81	78	74	70	66	63	56
SS 872/08	35	35	26		148	110	107	104	102	98	93	90	85	80	75	72	64
SS 872/09	40	40	30		165	123	121	117	114	110	104	101	95	90	85	81	72
SS 872/10	50	50	37		184	137	134	130	127	122	116	112	106	100	94	90	80
SS 872/11	50	50	37		203	151	147	143	140	134	128	123	117	110	103	99	88
SS 872/12	60	60	45		220	164	161	156	152	146	139	134	127	120	113	108	96
SS 872/13	60	60	45		233	178	174	169	165	159	151	146	138	130	122	117	104
SS 872/14	-	70	52		247	192	188	182	178	171	162	157	148	140	132	126	112
SS 872/15	-	70	52		265	206	201	195	191	183	174	168	159	150	141	135	120
SS 872/16	-	75	55		294	219	214	208	203	195	186	179	170	160	150	144	128
SS 872/17	-	75	55		313	233	228	221	216	207	197	190	180	170	160	153	136
SS 872/18	-	80	59		332	247	241	234	229	220	209	202	191	180	169	162	144
SS 872/19	-	90	66		349	260	255	247	241	232	220	213	201	190	179	171	152
SS 872/20	-	90	66		368	274	268	260	254	244	232	224	212	200	188	180	160
SS 872/21	-	100	75		387	288	281	273	267	256	244	235	223	210	197	189	168
SS 872/22	-	100	75		406	301	295	286	279	268	255	246	233	220	207	198	176

IMPO ürünleri üzerinde değişiklik yapma hakkına sahiptir.
IMPO reserves the right to modify products without a prior notice



50 Hz seçim aralığı: Q= 68 m ³ /sa - 112 m ³ /sa	
Standart Klepe Çıkışı : 5" İçten Pasolu 11 Diş (NPT : Özel istek)	
Fan tipi: Semiaksiyel	
Dönüş : Saat Yönü Ters	
Bağlantı : NEMA Standardına uygun	
Mil Çapı : 25 mm	
Minimum sıvı seviyesi: Emiş süzgecinin altından itibaren 1200 mm.	
Maksimum pompa dış çapı (Kablo muhafazası ile birlikte): 182 mm	
Pompalanan Sıvı: Kimyasal ve mekanik aşındırıcı olmayan akışkan.	
İzin veren maksimum kum miktarı = 50 g/m ³	
İzin verilen katı parçacık ölçüsü: Max 2mm	
İmalat ve güvenlik standartları:	Tarih
TS 11146:1993	01 / 2013
TS EN 809:2000 98/37/EC	REV. 0
TS EN ISO 12100-1:2007	TS EN ISO 12100-2:2006

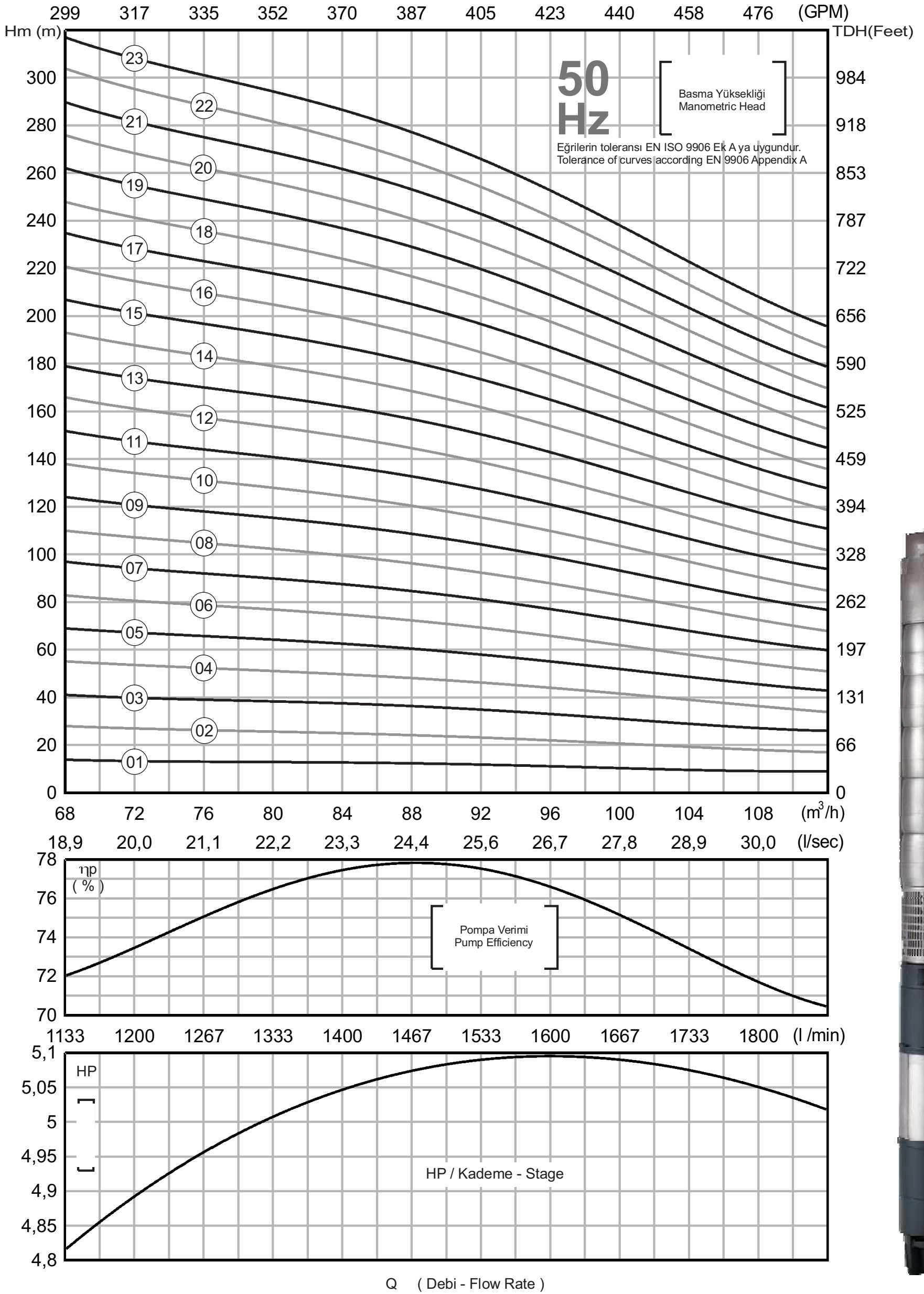
Operating range at 50 Hz: Q= 68 m ³ /h - 112 m ³ /h	
Standard Outlet : 5" Inside Threaded 11 TPI (NPT : Optional)	
Impeller type: Mixed flow	
Rotation : CCW	
Connection : According to NEMA Standard	
Shaft Diameter : 25 mm	
Minimum liquid level (NPSH) : 1200 mm from bottom of suction grid	
Maximum pump (Wet end) diameter - (Including cable guard): 182 mm	
Liquid being pumped: Chemically and mechanically non aggressive.	
Maximum allowable solid quantity = 50 g/m ³	
Solid dimension: Max 2mm	
Construction and safety standards:	Date
TS 11146:1993	01 / 2013
TS EN 809:2000 98/37/EC	REV. 0
TS EN ISO 12100-1:2007	TS EN ISO 12100-2:2006



POMPA TİPİ PUMP TYPE	MOTOR MOTEUR			ÖLÇÜLER / DIMENSIONS (mm)										AĞIRLIK / WEIGHT (kg)						
	6" HP	8" HP	kW	8"-6"	8"-8"	6"	8"	8"-6"	8"-8"	6"	8"	8"-6"	8"-8"	ø D	MOTOR		POMPA PUMP		TOPLAM TOTAL	
				L	L	E	E	B	B	ø = C	ø = C	ø PUMP	ø PUMP		6"	8"	8"-6"	8"-8"	8"-6"	8"-8"
SS 896/01	5,5	-	4	1200	-	630	-	570	-	145	-	174	-	5"	46	-	22	-	68	-
SS 896/02	10	-	7,5	1348	-	650	-	698	-	145	-	174	-	5"	48	-	25	-	73	-
SS 896/03	15	-	11	1556	-	730	-	826	-	145	-	174	-	5"	56	-	29	-	85	-
SS 896/04	20	-	15	1784	-	830	-	954	-	145	-	174	-	5"	60	-	32	-	92	-
SS 896/05	25	-	18,5	1962	-	880	-	1082	-	145	-	174	-	5"	72	-	35	-	107	-
SS 896/06	30	30	22	2190	2151	980	930	1210	1221	145	195	174	182	5"	82	121	38	40	120	161
SS 896/07	35	35	26	2368	2389	1030	1040	1338	1349	145	195	174	182	5"	88	140	41	42	129	182
SS 896/08	40	40	30	2576	2517	1110	1040	1466	1477	145	195	174	182	5"	98	140	44	45	142	185
SS 896/09	50	50	37	2784	2675	1190	1070	1594	1605	145	195	174	182	5"	106	146	47	47	153	193
SS 896/10	50	50	37	2912	2803	1190	1070	1722	1733	145	195	174	182	5"	106	146	50	50	156	196
SS 896/11	60	60	45	3120	2991	1270	1130	1850	1861	145	195	174	182	5"	116	158	53	53	169	211
SS 896/12	60	60	45	3248	3119	1270	1130	1978	1989	145	195	174	182	5"	116	158	56	55	172	213
SS 896/13	-	70	52	-	3327	-	1210	-	2117	-	195	-	182	5"	-	177	-	58	-	235
SS 896/14	-	70	52	-	3455	-	1210	-	2245	-	195	-	182	5"	-	177	-	60	-	237
SS 896/15	-	75	55	-	3623	-	1250	-	2373	-	195	-	182	5"	-	184	-	63	-	247
SS 896/16	-	80	59	-	3781	-	1280	-	2501	-	195	-	182	5"	-	190	-	65	-	255
SS 896/17	-	90	66	-	3994	-	1365	-	2629	-	195	-	182	5"	-	204	-	68	-	272
SS 896/18	-	90	66	-	4122	-	1365	-	2757	-	195	-	182	5"	-	204	-	70	-	274
SS 896/19	-	100	75	-	4315	-	1430	-	2885	-	195	-	182	5"	-	218	-	73	-	291
SS 896/20	-	100	75	-	4443	-	1430	-	3013	-	195	-	182	5"	-	218	-	75	-	293
SS 896/21	-	110	81	-	4641	-	1500	-	3141	-	195	-	182	5"	-	230	-	78	-	308
SS 896/22	-	110	81	-	4769	-	1500	-	3269	-	195	-	182	5"	-	230	-	81	-	311
SS 896/23	-	125	92	-	5017	-	1620	-	3397	-	195	-	182	5"	-	252	-	83	-	335

POMPA TİPİ PUMP TYPE	MOTOR MOTEUR			m ³ /h	0	68	72	76	80	84	88	92	96	100	104	108	112
	6" HP	8" HP	kW	l / sec	0,00	18,89	20,00	21,11	22,22	23,33	24,44	25,56	26,67	27,78	28,89	30,00	31,11
				gpm	0	299	317	335	352	370	387	405	423	440	458	476	493
SS 896/01	5,5	-	4		16	14	13	13	13	13	12	12	11	10	10	9	9
SS 896/02	10	-	7,5		33	28	27	26	26	25	24	23	22	21	19	18	17
SS 896/03	15	-	11		50	41	40	39	38	38	36	35	33	31	29	27	26
SS 896/04	20	-	15		67	55	54	52	51	50	48	46	44	42	39	36	34
SS 896/05	25	-	18,5		84	69	67	66	64	63	60	58	55	52	49	45	43
SS 896/06	30	30	22		100	83	80	79	77	75	72	69	66	62	58	54	51
SS 896/07	35	35	26		117	97	94	92	90	88	84	81	77	73	68	63	60
SS 896/08	40	40	30		134	110	107	105	102	100	96	92	88	83	78	72	68
SS 896/09	50	50	37		151	124	121	118	115	113	108	104	99	94	87	81	77
SS 896/10	50	50	37		160	138	134	131	128	125	120	115	110	104	97	90	85
SS 896/11	60	60	45		184	152	147	144	141	138	132	127	121	114	107	99	94
SS 896/12	60	60	45		201	166	161	157	154	150	144	138	132	125	116	108	102
SS 896/13	-	70	52		218	179	174	170	166	163	156	150	143	135	126	117	111
SS 896/14	-	70	52		225	193	188	183	179	175	168	161	154	146	136	126	119
SS 896/15	-	75	55		242	207	201	197	192	188	180	173	165	156	146	135	128
SS 896/16	-	80	59		257	221	214	210	205	200	192	184	176	166	155	144	136
SS 896/17	-	90	66		274	235	228	223	218	213	204	196	187	177	165	153	145
SS 896/18	-	90	66		302	248	241	236	230	225	216	207	198	187	175	162	153
SS 896/19	-	100	75		319	262	255	249	243	238	228	219	209	198	184	171	162
SS 896/20	-	100	75		336	276	268	262	256	250	240	230	220	208	194	180	170
SS 896/21	-	110	81		352	290	281	275	269	263	252	242	231	218	204	189	179
SS 896/22	-	110	81		369	304	295	288	282	275	264	253	242	229	213	198	187
SS 896/23	-	125	92		386	317	308	301	294	288	276	265	253	239	223	207	196

IMPO ürünleri üzerinde değişiklik yapma hakkına sahiptir.
IMPO reserves the right to modify products without a prior notice



Performans eğrileri kinematik viskozite $\nu = 1 \text{ mm}^2/\text{s}$ ve yoğunluk $\rho = 1000 \text{ kg/m}^3$ temel alınarak oluşturulmuştur
Performance curves are based on the kinematic viscosity $\nu = 1 \text{ mm}^2/\text{s}$ and density $\rho = 1000 \text{ kg/m}^3$